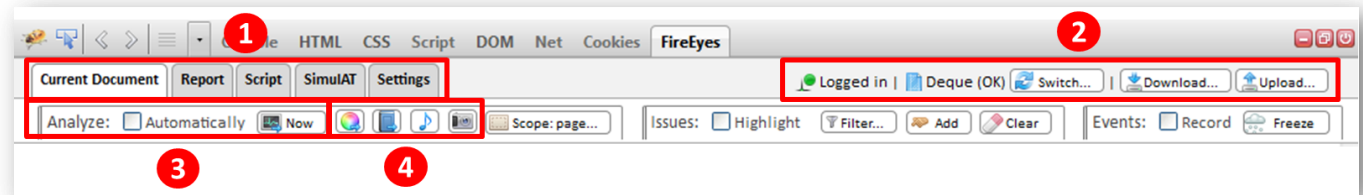




FireEyes Quick Reference Guide



1 FireEyes Tabs

- **Current Document** - analyze and view a list of issues on the current page
- **Report** - view a list of all issues on all pages analyzed
- **Script** - record, view, modify and playback scripts, and analyze webpages using scripts
- **SimulAT** - view how an Assistive Technology (e.g. JAWS) would read the page
- **Settings** - login to WorldSpace, view Analysis Settings, and create Scope Definitions

2 FireEyes Toolbar

- **WorldSpace Login Status** and **Project Login Status**
- **Switch** - switch to another WorldSpace Project
- **Download** - download issues or scripts from the WorldSpace server
- **Upload** - upload issues or scripts to the WorldSpace server

3 Basic Analysis Options



Now – Purpose: analyze accessibility of the current page

Automatically – Purpose: analyze dynamic content continually as you navigate through a site and perform actions (caution: resource-intensive!)

4 Special Analysis Options



Color contrast – Purpose: To find out if contrast is sufficient for people with low vision.



Reading order – Purpose: To find out if the visual reading order matches the screen reader order.



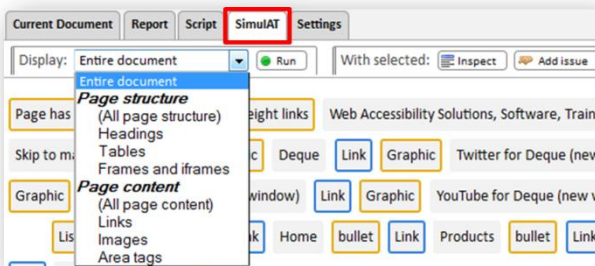
ARIA – Purpose: To find out if there are issues with the ARIA markup.



Focus – Purpose: To find out if sighted keyboard users can see the keyboard focus when tabbing through the web page.

SimulAT

Purpose: To simulate how a screen reader (such as JAWS) reads the page. Simulate the audio output of an *Entire Document* or select part of the *Page Structure* (such as headings, tables, frames, links, etc.) or *Page Content* (links, images, etc.).

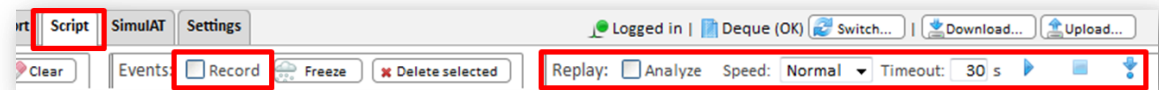


Scripts

Purpose: To analyze the accessibility of processes or transactions (logging in, filling out a form, adding to cart, etc.)

Record a script: Record Scripts on the **Script** tab. Select the **Record** checkbox, refresh the page, navigate through the site recording actions such as logging into a system or filling a shopping cart, uncheck the **Record** checkbox, select the **Upload** button to save the Script to WorldSpace.

Analyze using a script: Perform an analysis using a Script via the **Script** tab. Go to the first page of the Scripted event, check the **Analyze** checkbox, select the **Play** arrow (blue arrow). View results on the **Report** tab.



Scope Definitions **Purpose:** To analyze only sections of a page (e.g. just the template or just the content).

Create Scope Definitions: On the **Settings** tab, scroll down to **Analysis scope definitions**, enter a **Name**, select a **Category**, define an **xPath**, and **Save** the Scope.

Perform an analysis with Scope Definitions: On the **Current Document** tab, select the **Scope** button, choose desired **Analysis Scope** options, and analyze **Now** or **Automatically**.

